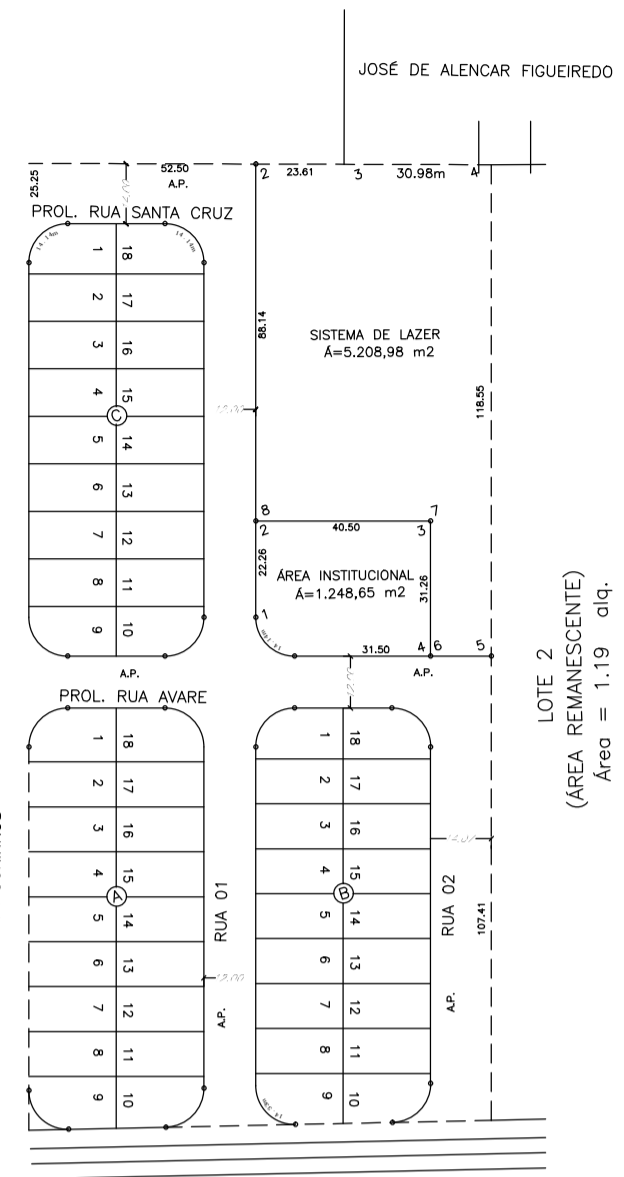
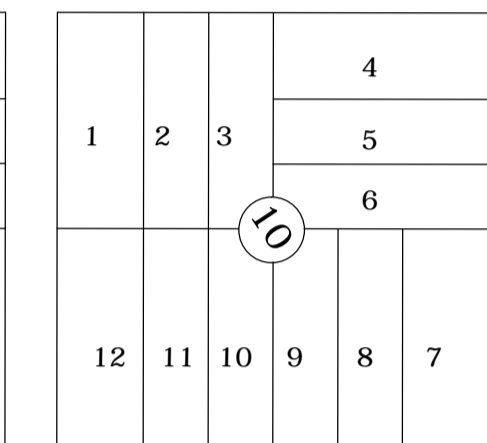
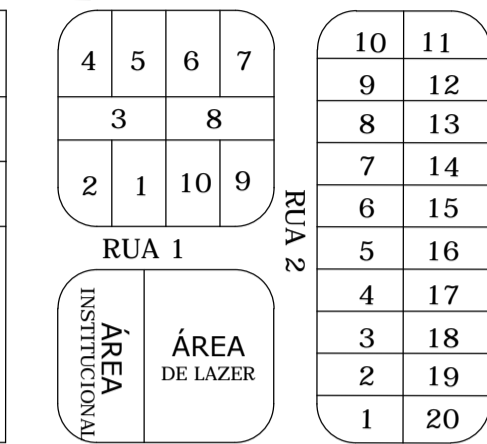
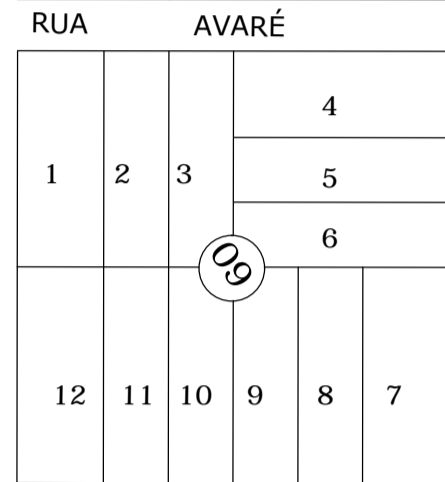
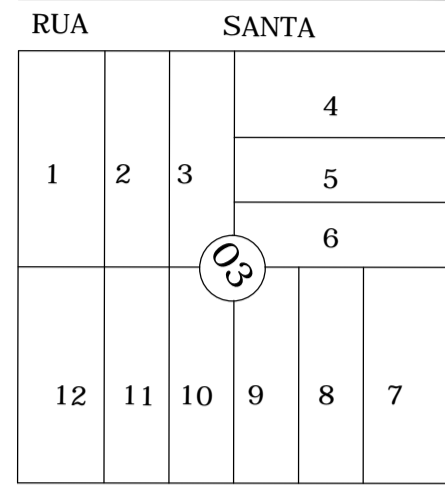
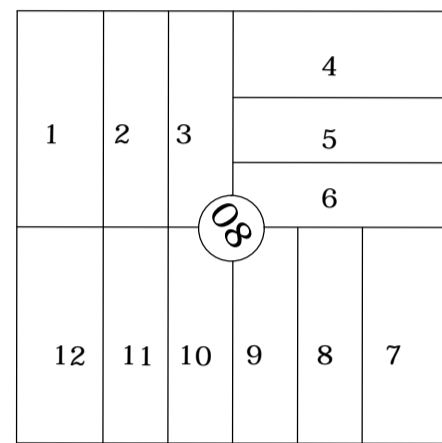
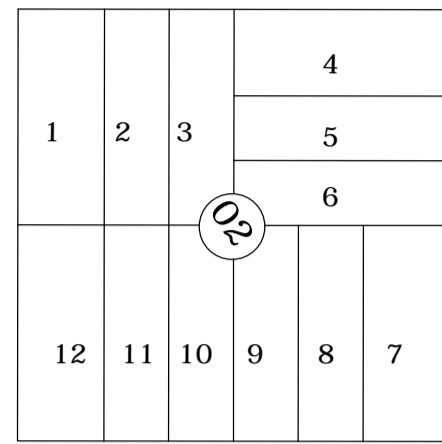
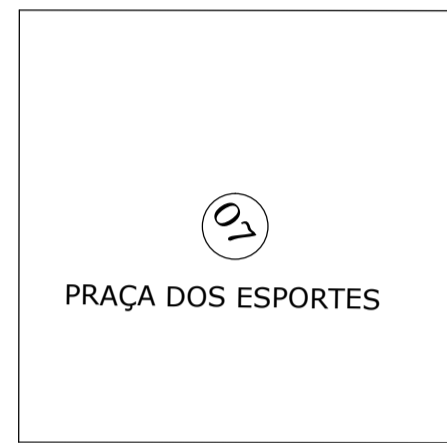
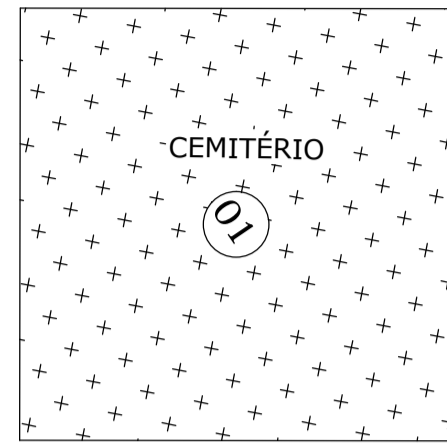
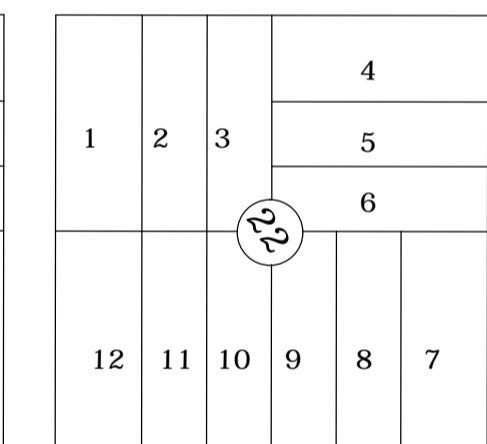
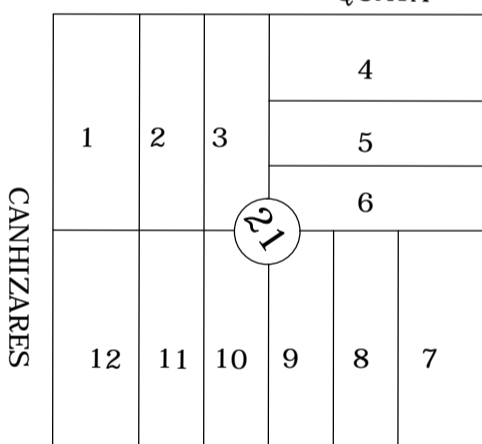
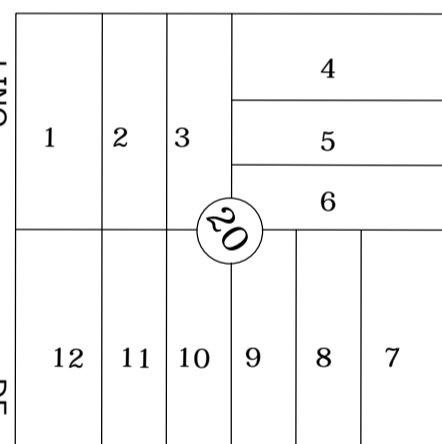
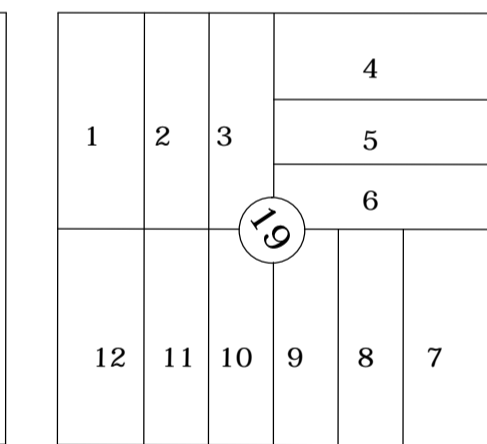
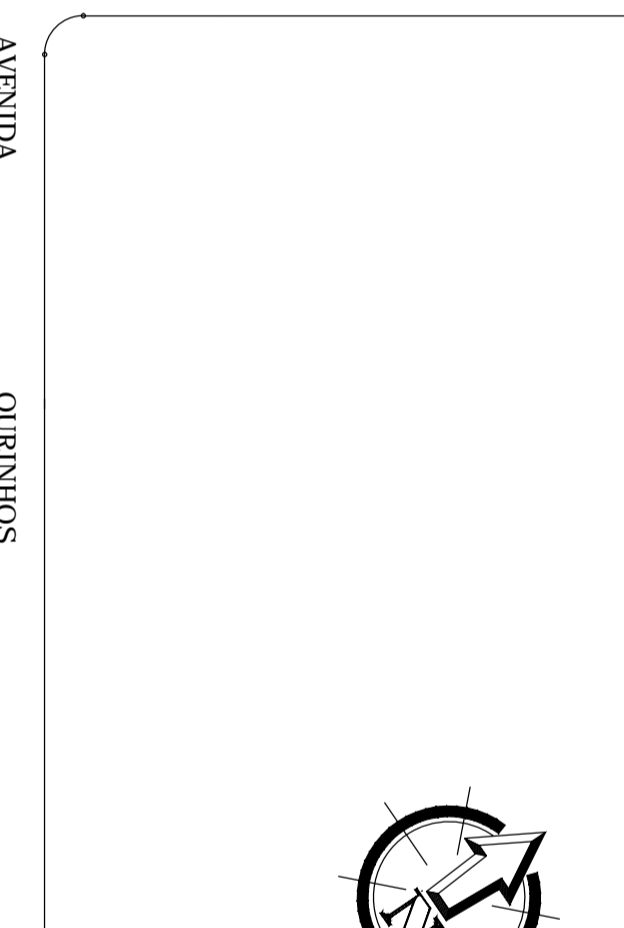
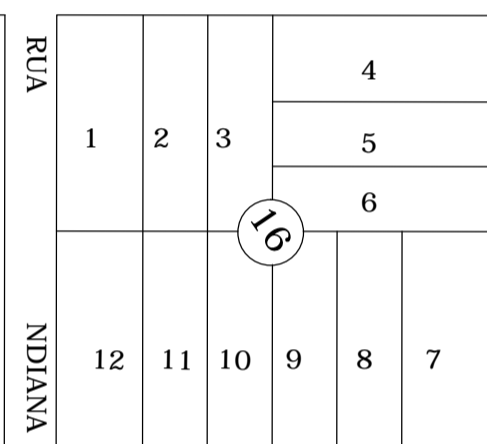
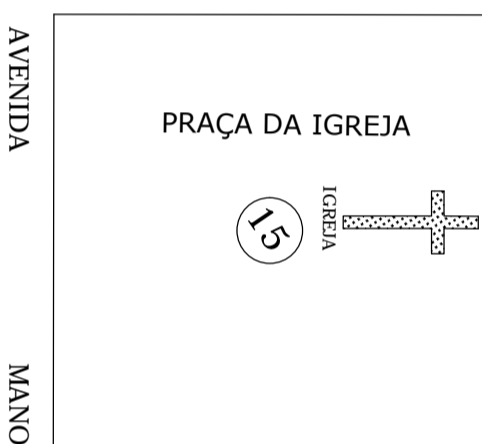
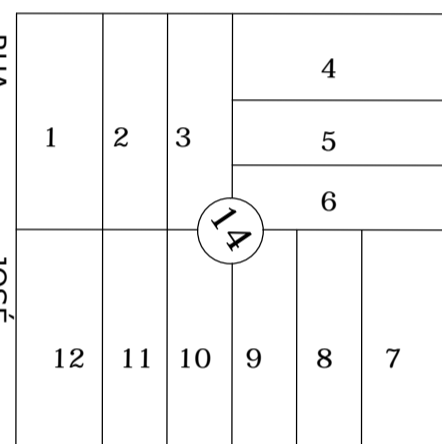
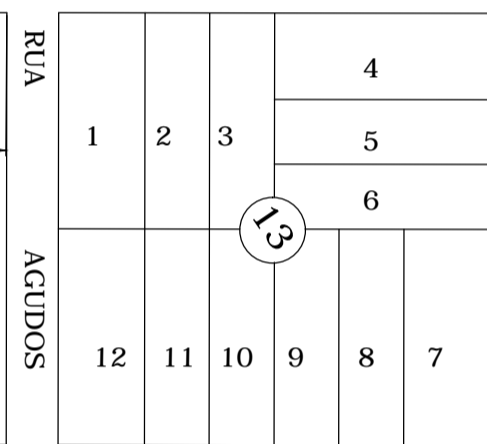


DISTRITO DE GUACHOS

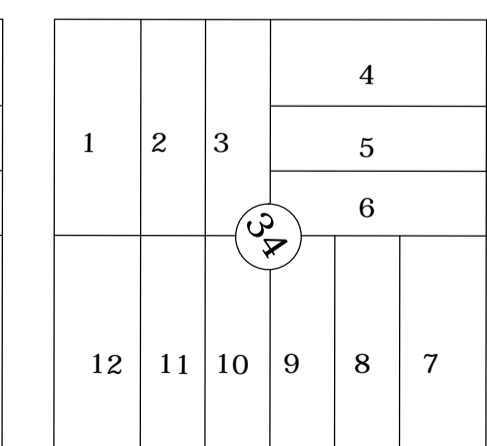
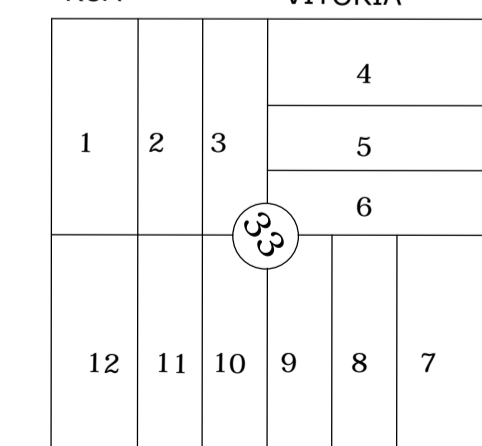
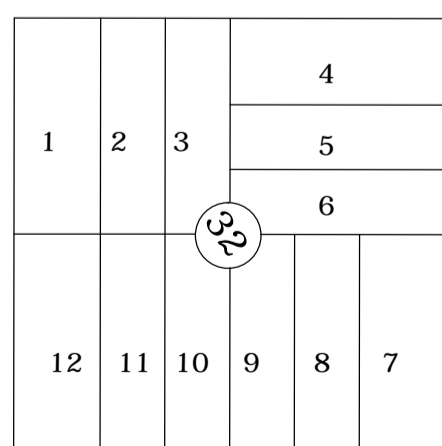
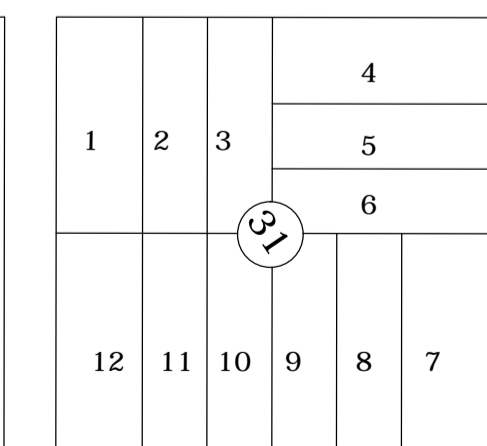
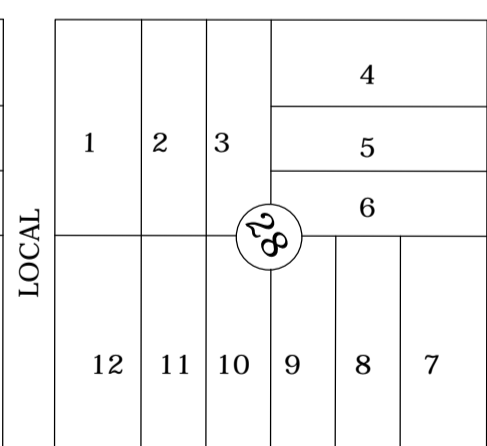
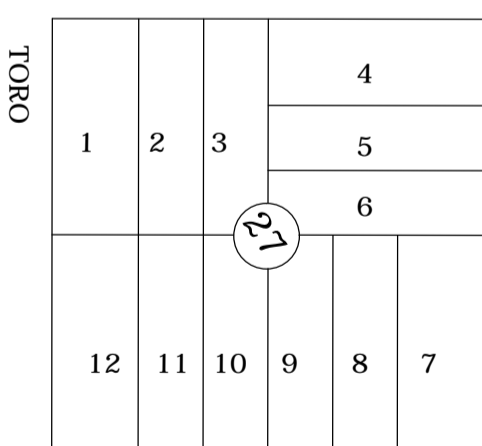
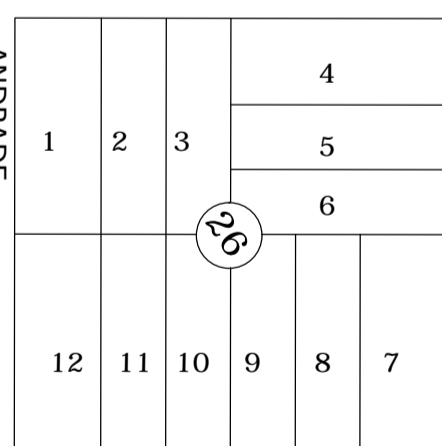
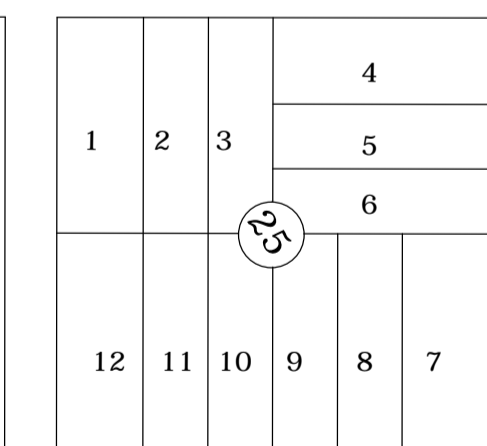
PLANTA GERAL 2014



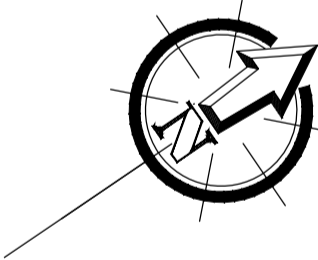
AVENIDA ANTÔNIO LINO DE OLIVEIRA



AVENIDA LARANJA DOCE



RUA PALMITAL



PLANTA BAIXA
ESCALA 1:1.750

DISTRITO DE GUACHOS MUNICÍPIO DE MARTINÓPOLIS-SP	
SITUAÇÃO SP 425 RODOVIA ASSIS CHATEUBRIAND KM	PREFEITO : ANTÔNIO LEAL CORDEIRO
ALTITUDE 475 PERÍMETRO URBANO , m2	VICE-PREFEITA : ILZA FILAZI ASCÊNCIO
 0 100 200 300 400 500 GRÁFICO	
PREFEITURA DO MUNICÍPIO DE MARTINÓPOLIS	
2012-2016 NO PRESENTE, CONSTRUINDO O FUTURO	
DIRETOR DO DEPARTAMENTO DE ENGENHARIA E OBRAS EDUARDO CARLOS DE O. FRANKE ARQ. E URB. - CAU: A24365-5	
PROJETA JESUINO MARTINS DE BRITO TÉCNICO EM EDIFICAÇÕES - C R E A 5060275576-ID	
DESENHO : DEP. DE ENGENHARIA	MODIFICADO: JULHO/2014